

SR 19 Over Little Lake Harris Bridge

Leesburg, Florida

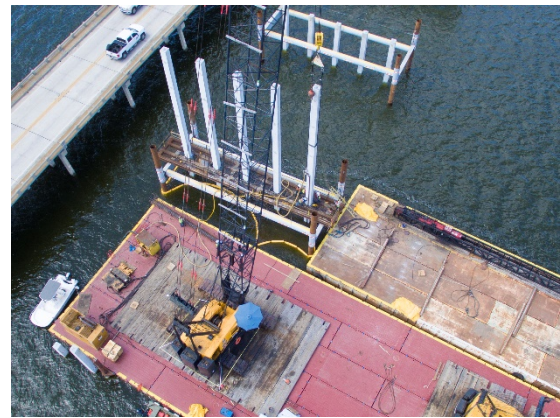


SR-19 during construction

Project Information	
Owner:	Florida DOT
Client:	Leware Construction Co. of FL, Inc.
Project Name:	SR-19 Over Little Lake Harris Bridge
Project Cost:	\$22 Million
Completion Date:	2020
GRL Services Provided	
<ul style="list-style-type: none">▪ Assistance in developing the pile installation plan▪ Pile Driving Analyzer® (PDA) testing▪ CAPWAP® data analysis▪ GRLWEAP Wave Equation Analysis▪ Recommendations for production piles	
GRL OFFICE: FLORIDA	

The current bridge over Little Lake Harris in Central Florida has been in use since 1950. The original bridge that connected Howey and Astatula was a long, wooden bridge that opened in 1927. After the second span was built, the wooden bridge was torn down, only leaving a small dock in its place. Being the third iteration of the pathway from Howey and Astatula, it is of significance that the new bridge can service the drivers of Lake County, Florida. The Florida Department of Transportation (FDOT) initiated this design/build project with the intention of conforming the bridge to meet current safety standards. GRL Engineers, Inc. (GRL) was brought onto the project in December 2017, for dynamic pile testing and related service, as the specialty consultant member of the design/build team for the piling work.

During the pile installations, GRL performed 100% testing with the Pile Driving Analyzer® (PDA) and analyzed the results of all 210 driven piles, PDA data was analyzed using CAPWAP® signal matching software. The data from these tests show that all project piles were driven to below the required minimum tip elevation, and achieved ultimate load bearing capacities. The test records of all piles do not contain characteristics that would indicate pile structural integrity issues. All good news for the citizens of Lake County.



For additional information, please contact: info@grlengineers.com